



**zamanat**

# **Gulberg Grove**

# SALIENT FEATURES OF GULBERG GROVE

**Maid Room:** Space For A Maid's Room Along With A Servant's Bathroom In Each Apartment.

**Attached Baths:** All Apartments Have Attached Baths With Each Bedroom Plus A Powder Room.

**Laundry Arrangement:** Provision For A Washer And Dryer In Each Apartment.

**Covered Entrance:** Grand Fully Covered Drive-in Entrance With Convenient Drop Off And Pick Up.

**Indoor Swimming Pool:** Over 50 Ft Long Indoor Swimming Pool.

**Private Auditorium:** 60 Seat Private Wide Screen Film And Tv Auditorium.

**Café:** Lobby Café For Entertaining Guests Or Having A Meet-up With Fellow Residents.

**Gymnasium:** State Of The Art Gymnasium.

**Well Equipped Game Room:** Game Room With Snooker Table, Table Tennis, Foosball Table, Carrom Board, Chess Board Etc.

**Day Care Room:** Day Care Room For Small Children.

**Party Lounge:** Elegant Reception And Party Lounge For Up To 100 Guests.

**Six Lifts:** Three Lifts (one For Servants) In Each Tower (total 6)

**Male Servant Lodging:** Sleeping Accommodation For One Male Servant Per Apartment In 4 Common Dormitories,

**Two Full Basements For Parking:** Ample parking for all residents and their guests

 **Central Location**

 **All Corner Apartments**

 **Spacious Sizes**

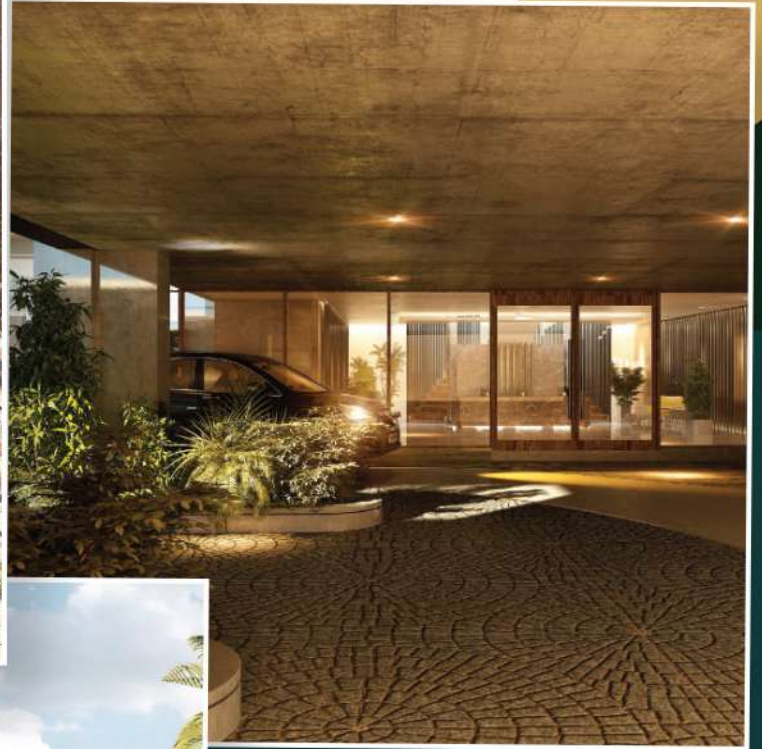
 **Terraces**

 **Two Kitchens**

 **Two Entrances**

# Welcome to Gulberg Grove

- Located in the heart of Gulberg III, near Liberty Market.
- Lahore's most prestigious living destination.
- Tier 1 Luxury Living.
- Development by Liberty Condominiums.
- Designed by accomplished architect Mr. Omar Hassan.
- Boasting modern architecture.
- Banglow Like living.
- Top of the Line Amenities.

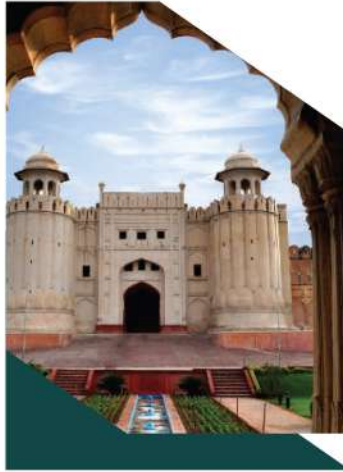


# Lahore

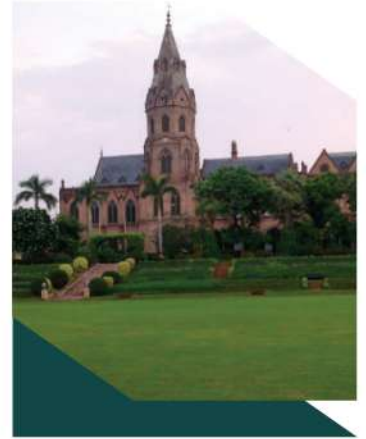
The Majestic City



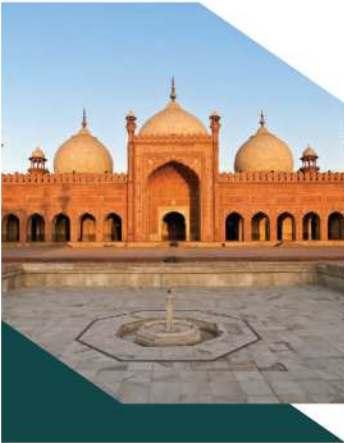
Gulberg, provides the ultimate urban lifestyle.



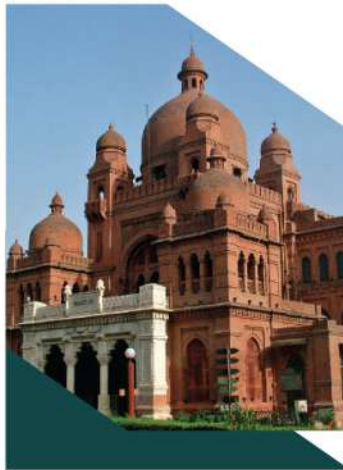
Lahore's real estate continues to show strong growth.



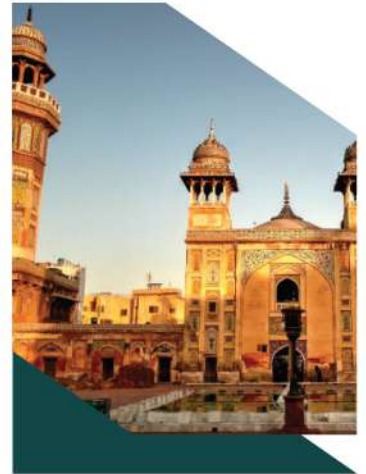
British Raj, and the suburbs of Gulberg and Cantt feature palatial mansions and trendy shopping districts.



which has consequently led to the fermentation of this rich brew we call Lahore.



Lahore ... home to nearly as many people as New York,



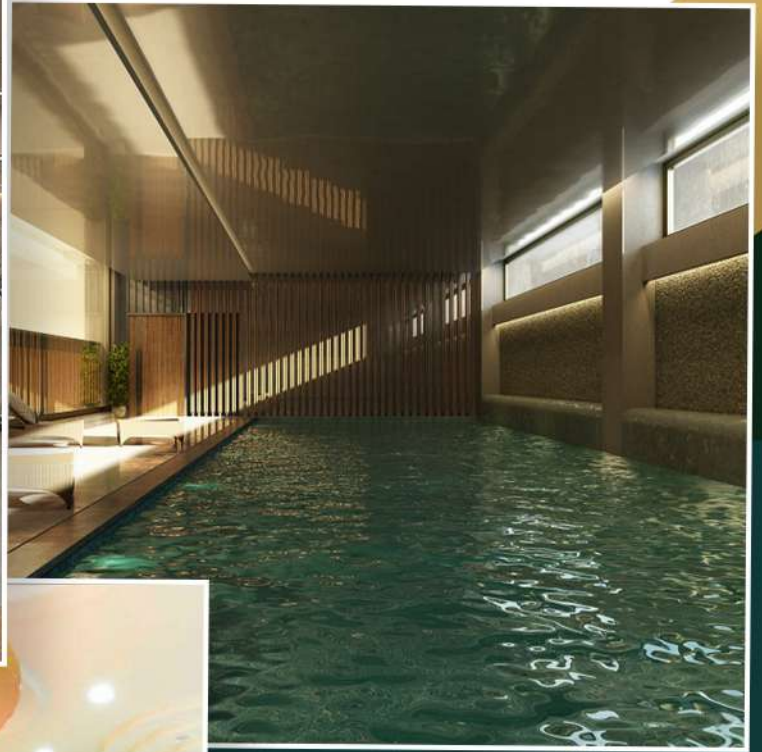
British Raj, and the suburbs of Gulberg and Cantt feature palatial mansions and trendy shopping districts.

# Gulberg Grove Clubhouse

A state of the art gymnasium with sauna and changing rooms.

An indoor swimming pool that can be used year round. Perfect for doing laps or escaping the city's summer sun.

A fully monitored play area/nursery for young kids.

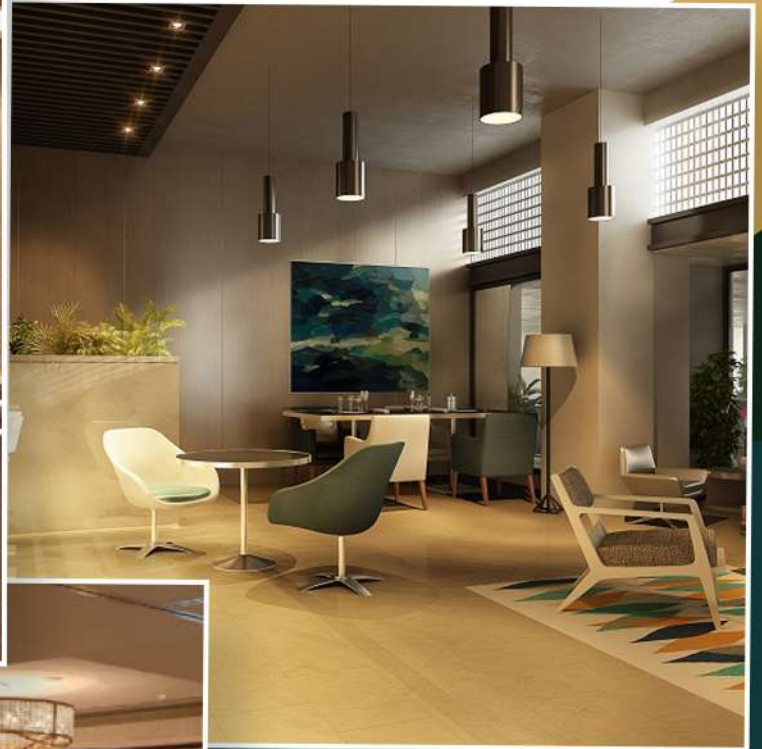


# Gulberg Grove Theater, Lounge and Banquet

A luxuriously comfortable 50 seat cinema/theatre that will be available for the residents.

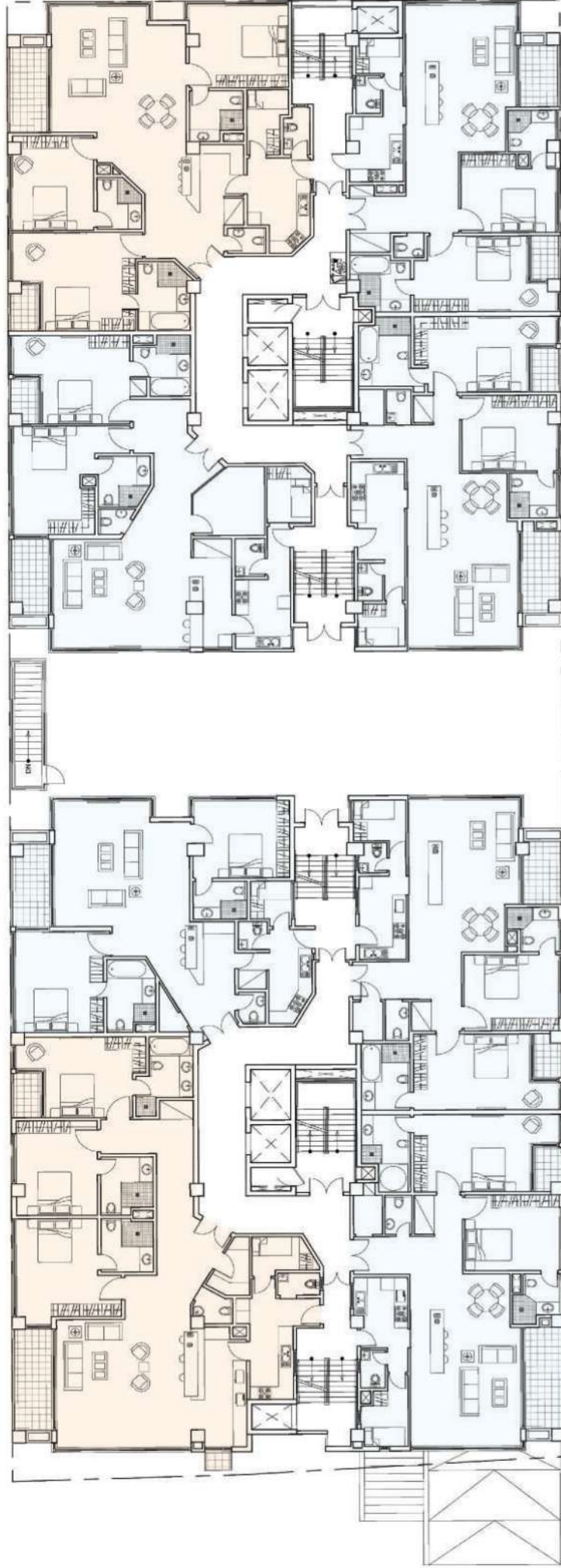
A place to socialize with family, guests and neighbours.  
The lounge will offer delectable food and drinks to the residents

A purpose built room for hosting a party, banquet, wedding or reception, or any other social event.



SOUTH TOWER

NORTH TOWER



**3 BED APARTMENT**

**2 BED APARTMENT**

- Two Bedroom en suite.
- One Master With Private Terrace.
- Living Rooms With Dining And Sitting Areas.
- Fully Furnished Kitchen.
- Grease Kitchen.
- Powder Room.
- Maid's Room.
- Utility Closet For Washer/dryer.
- Study Room.
- Terrace.

## APARTMENT A - NORTH TOWER.

AREA = 1556 SQ.FT

2-Bed Apartment

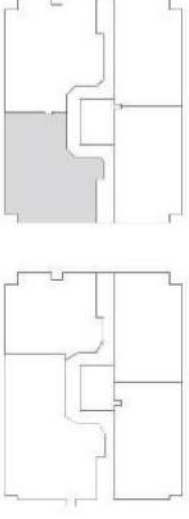
### AVAILABLE ON

Ground Floor

First Floor

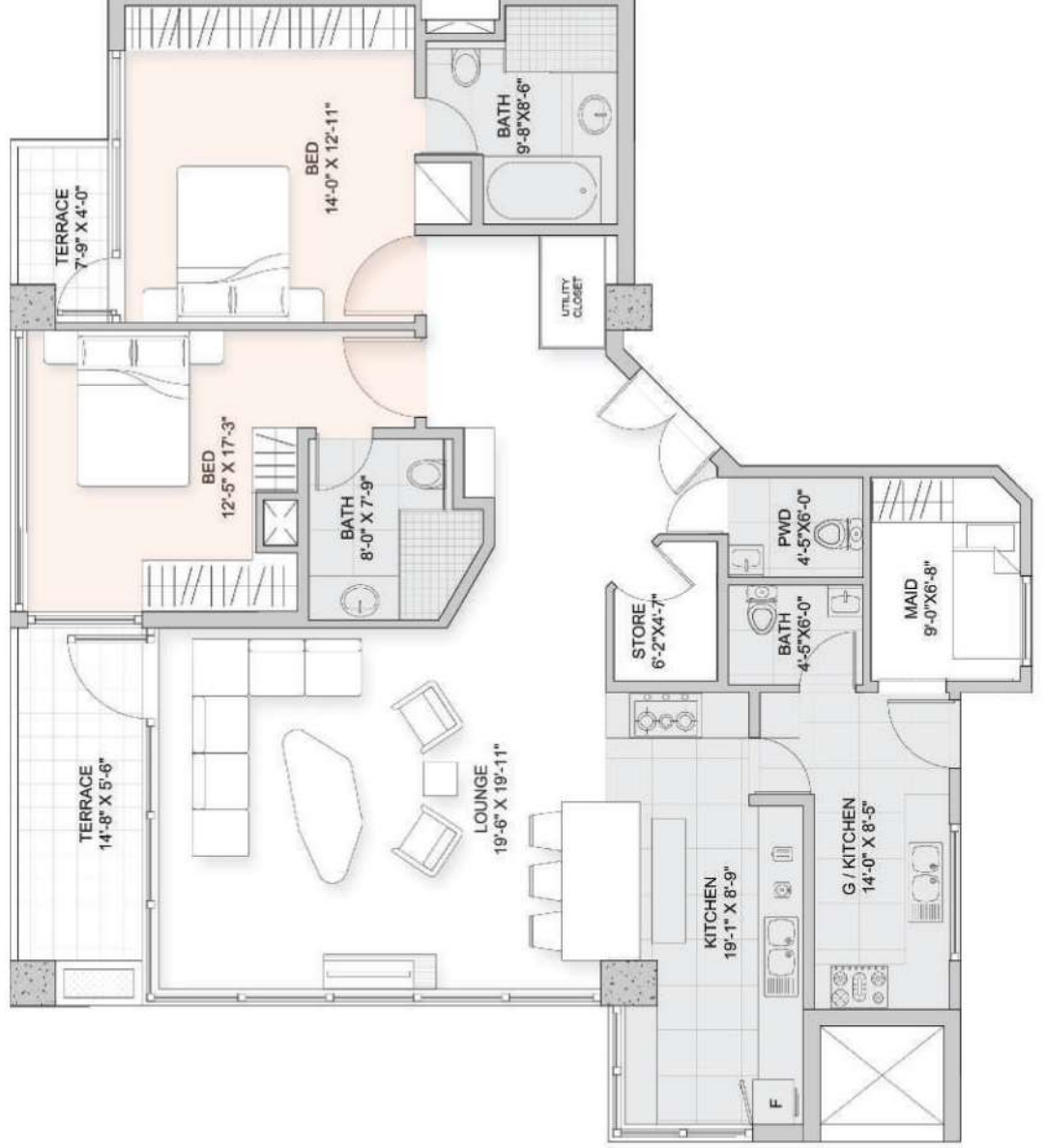
Second Floor

Third Floor



### Apartment Composition.

- Two Bedroom en suite.
- One Master With Private Terrace.
- Living Rooms With Dining And Sitting Areas.
- Fully Furnished Kitchen.
- Grease Kitchen.
- Powder Room.
- Maid's Room.
- Utility Closet For Washer/dryer.
- Study Room.
- Terrace.



**APARTMENT D - NORTH TOWER.**

AREA = 1635 SQ.FT

2-Bed Apartment

**AVAILABLE ON**

Ground Floor

First Floor

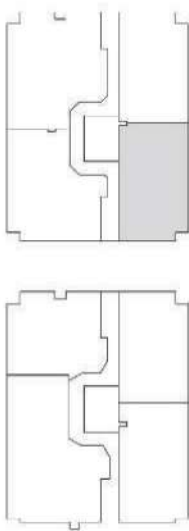
Second Floor

Third Floor



**Apartment Composition.**

- Two Bedroom en suite.
- One Master With Private Terrace.
- Living Rooms With Dining And Sitting Areas.
- Fully Furnished Kitchen.
- Grease Kitchen.
- Powder Room.
- Maid's Room.
- Utility Closet For Washer/dryer.
- Mid - Sized Store Room.
- Terrace.



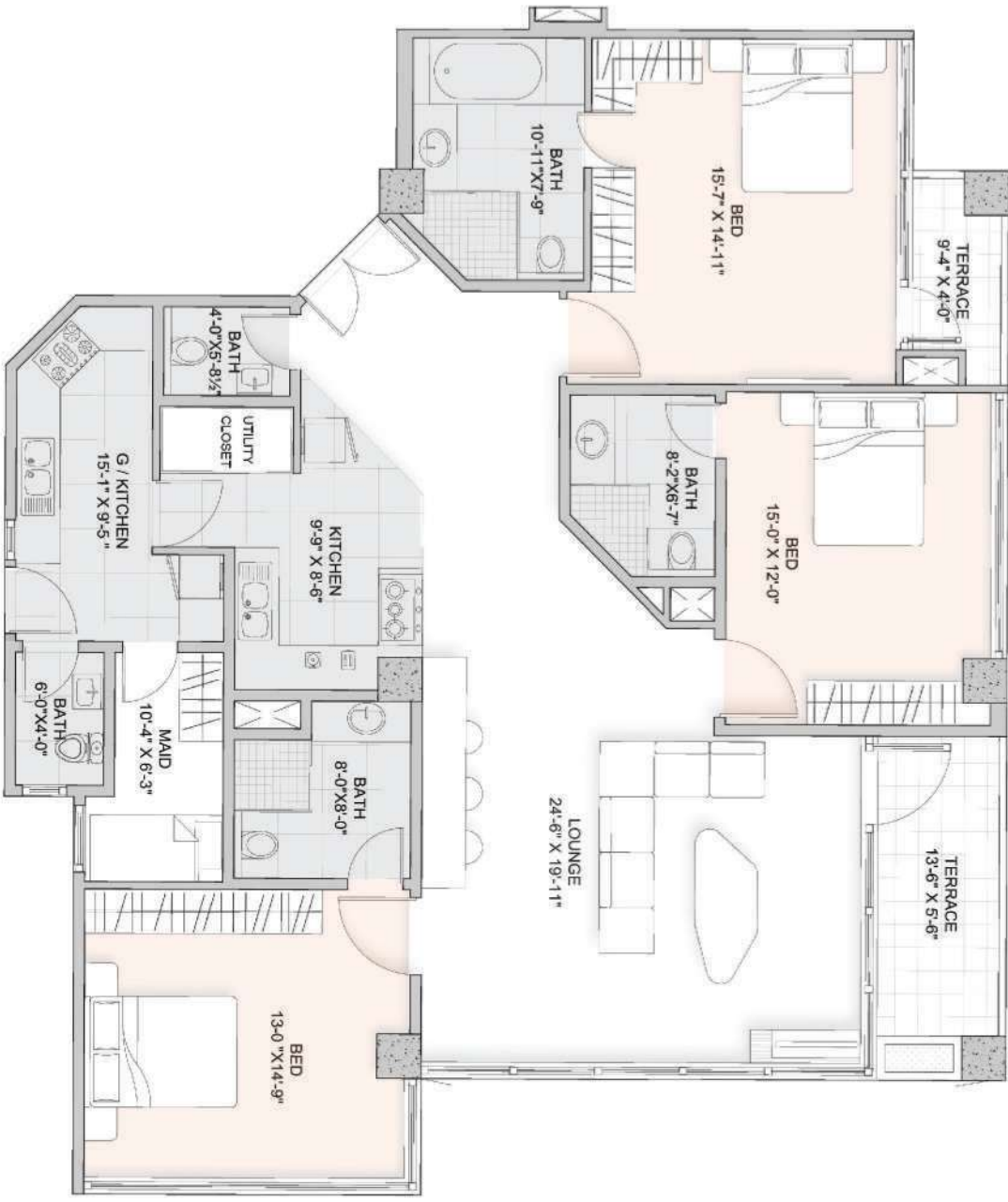
**APARTMENT B - NORTH TOWER**

AREA = 1960 SQ.FT

3-Bed Apartment

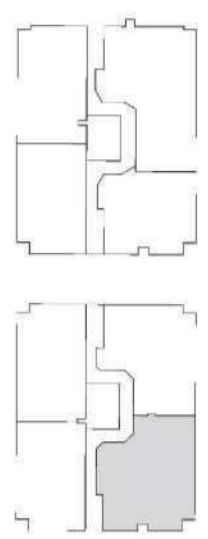
**AVAILABLE ON**

- Ground Floor
- First Floor
- Second Floor
- Third Floor



**Apartment Composition.**

- Three Bedroom en suite.
- One Master With Private Terrace.
- Living Rooms With Dining And Sitting Areas.
- Fully Furnished Kitchen.
- Grease Kitchen.
- Powder Room.
- Maid's Room.
- Utility Closet For Washer/dryer.
- Mid-Sized Store Room.
- Terrace.



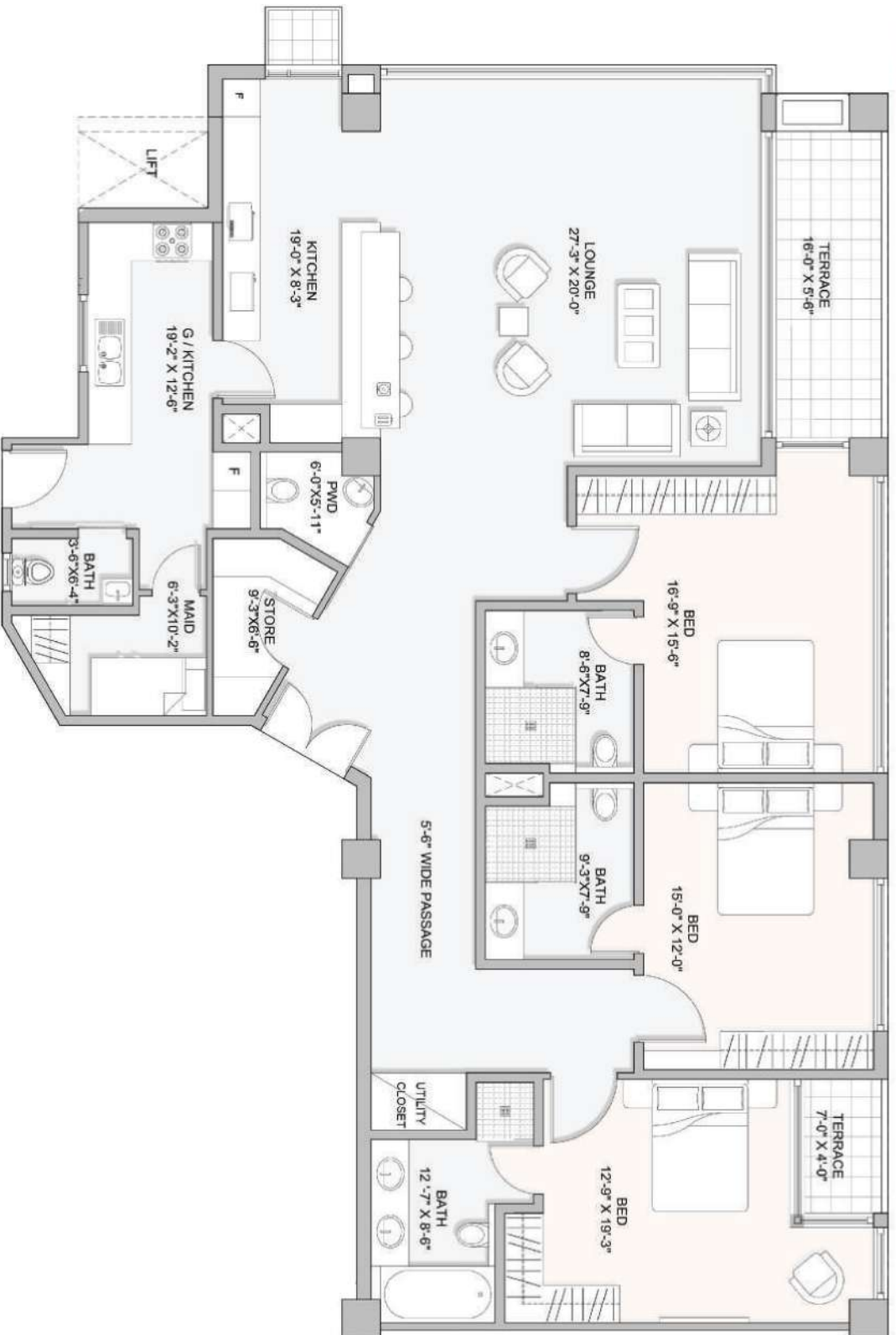
**APARTMENT A - SOUTH TOWER.**

AREA = 2316 SQ.FT

3-Bed Apartment

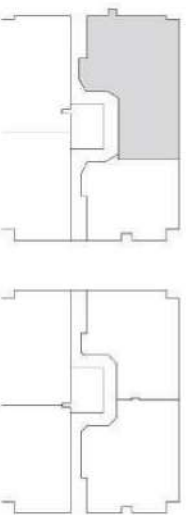
**AVAILABLE ON**

- First Floor
- Second Floor
- Fourth Floor
- Fifth Floor



**Apartment Composition.**

- Three Bedroom en suite.
- One Master With Private Terrace.
- Living Rooms With Dining And Sitting Areas.
- Fully Furnished Kitchen.
- Grease Kitchen.
- Powder Room.
- Maid's Room.
- Utility Closet For Washer/dryer.
- Mid-Sized Store Room.
- Terrace.



**APARTMENT C - NORTH TOWER.**

AREA = 1383 SQ.FT

2-Bed Apartment

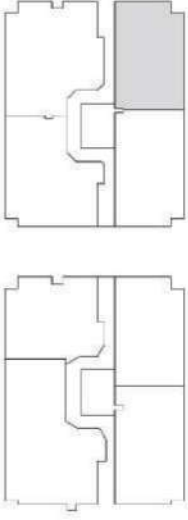
**AVAILABLE ON**

Ground Floor

First Floor

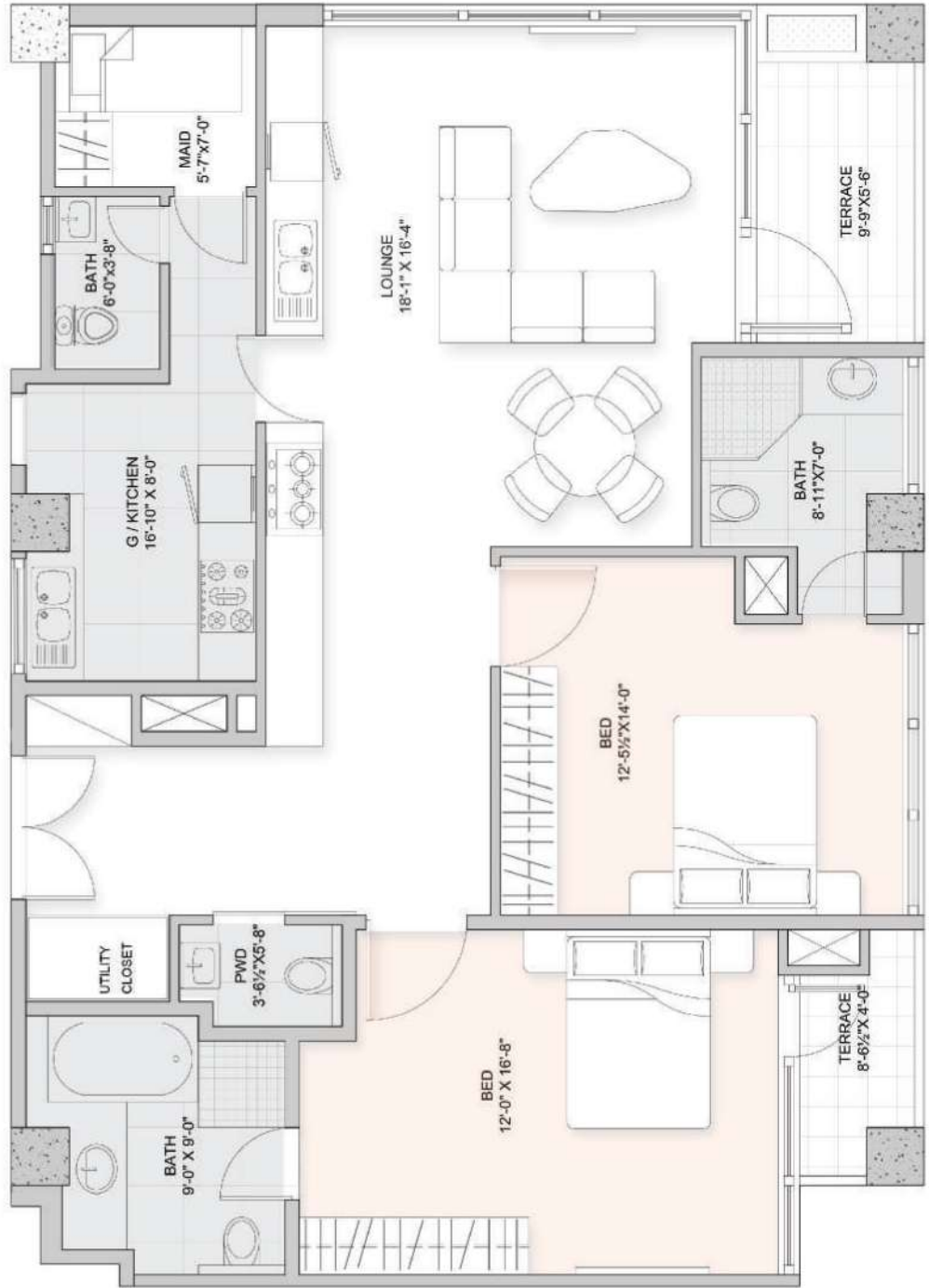
Second Floor

Third Floor



**Apartment Composition.**

- Two Bedroom en suite.
- One Master With Private Terrace.
- Living Rooms With Dining And Sitting Areas.
- Fully Furnished Kitchen.
- Grease Kitchen.
- Powder Room.
- Maid's Room.
- Utility Closet For Washer/dryer.
- Terrace.

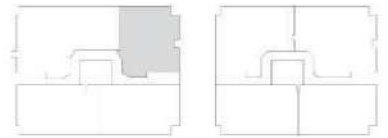


**APARTMENT B - SOUTH TOWER.**

AREA = 1530 SQ.FT  
2-Bed Apartment

**AVAILABLE ON**

- Ground Floor
- First floor
- Second Floor
- Third Floor
- Fourth Floor
- Fifth Floor



**Apartment Composition.**

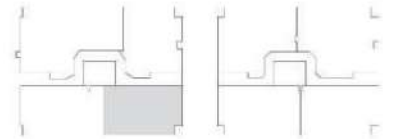
- Two Bedroom en suite.
- One Master Bed.
- Living Rooms With Dining And Sitting Areas.
- Fully Furnished Kitchen.
- Grease Kitchen.
- Powder Room.
- Maid's Room.
- Utility Closet For Washer/dryer.
- Store Room.
- Terrace.

**APARTMENT C - SOUTH TOWER.**

AREA = 1141 SQ.FT  
2-Bed Apartment

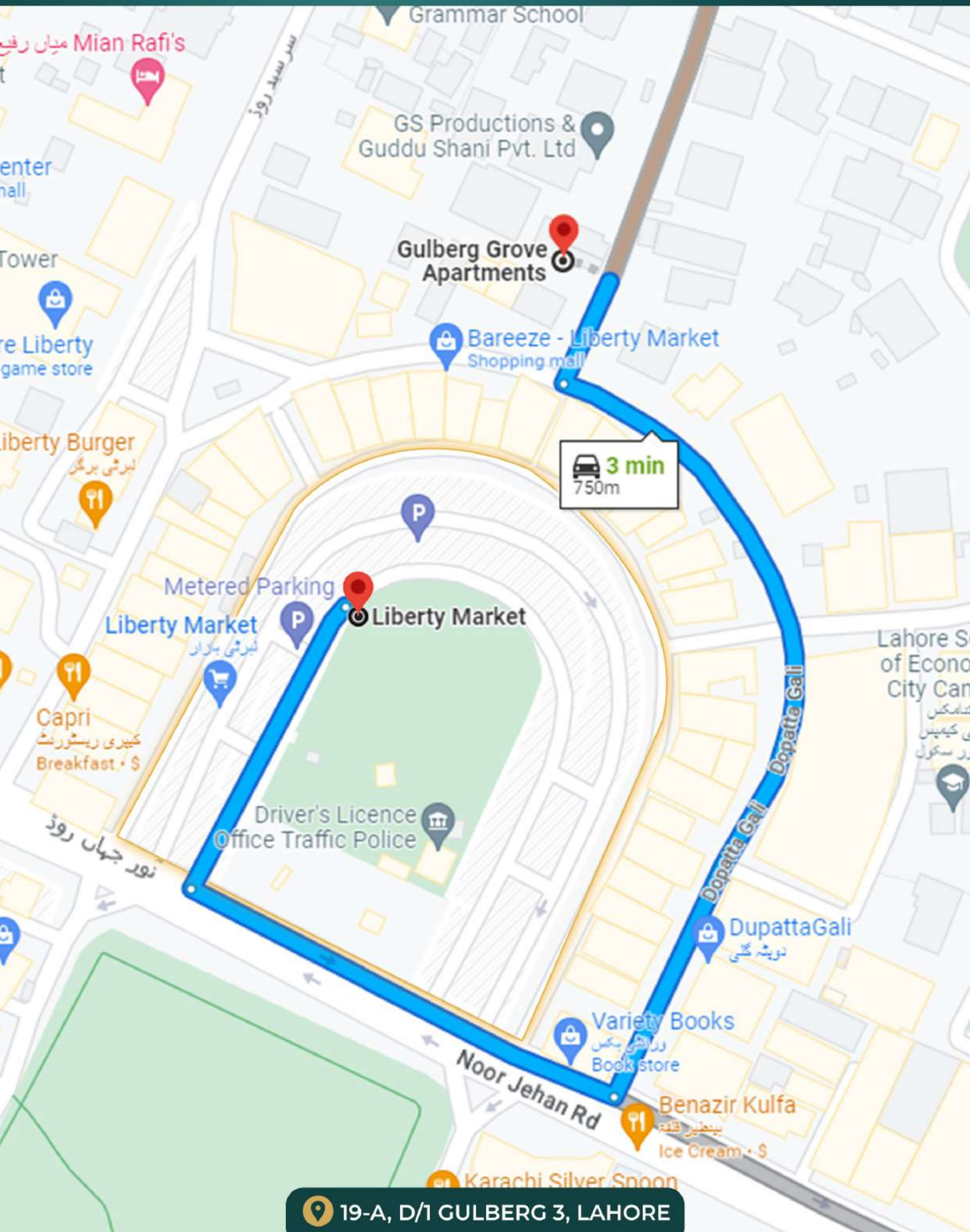
**AVAILABLE ON**

- Ground Floor
- First floor
- Third Floor
- Fourth Floor



**Apartment Composition.**

- Two Bedroom en suite.
- One Master With Private Terrace.
- Living Rooms With Dining And Sitting Areas.
- Fully Furnished Kitchen.
- Grease Kitchen.
- Powder Room.
- Maid's Room.
- Utility Closet For Washer/dryer.
- Mid-Sized Store Room.
- Terrace.



## SALIENT FEATURES WHICH SET US APART

# GULBERG GROVE

**Central location:** 3 minutes from the main Liberty Market, 3 minutes to the signal free main boulevard/Jail road and 5 minutes to the signal free Ferozpur road, thereby making all of Lahore accessible within 20 to 25 minutes.

**All Corner Apartments:** Two Towers. Four Apartments per floor per tower. Each Apartment is a corner apartment providing ample amount of lighting and cross ventilation. Total Apartments – ONLY 52, providing a high level of exclusivity. Two Bed – 36, Three bed – 12 and 4 bed penthouses – 4.

**Spacious Sizes:** commodious apartments varying in sizes from 1500 sq ft to 2380 sq ft carpet area. Clear height between floor and ceiling is 10.5 ft vs. 9.5 ft of most other similar apartment buildings. (11% additional breathing space for the same covered area)

**Terraces:** 2 Covered terraces per apartment in most of the apartments.

**Two Kitchens:** An open kitchen in the lounge area in addition to the main kitchen. Fully equipped with all appliances including, microwave, oven, fridge, dish washer etc.

**Two Entrances:** Separate direct entrance for servants to the Kitchen. Kitchen separated from the main apartment through a locked door to ensure security and convenience.

**Maid Room:** Space For A Maid's Room Along With A Servant's Bathroom In Each Apartment.

**Attached Baths:** All Apartments Have Attached Baths With Each Bedroom Plus A Powder Room.

**Laundry Arrangement:** Provision For A Washer And Dryer In Each Apartment.

**Covered Entrance:** Grand Fully Covered Drive-in Entrance With Convenient Drop Off And Pick Up.

**Indoor Swimming Pool:** Over 50 Ft Long Indoor Swimming Pool.

**Private Auditorium:** 60 Seat Private Wide Screen Film And Tv Auditorium.

**Café:** Lobby Café For Entertaining Guests Or Having A Meet-up With Fellow Residents.

**Gymnasium:** State Of The Art Gymnasium.

**Well Equipped Game Room:** Game Room With Snooker Table, Table Tennis, Foosball Table, Carrom Board, Chess Board Etc.

**Day Care Room:** Day Care Room For Children.

**Party Lounge:** Elegant Reception And Party Lounge For Up To 100 Guests.

**Six Lifts:** Three lifts (one for servants) in each tower (total 6) vs 2-3 lifts in most other apartment buildings.

**Male Servant Lodging:** Sleeping Accommodatio For One Male Servant Per Apartment In 4 Common Dormitories,

**Two Full Basements For Parking:** ne and two parking spots available for each 2 and 3-bedroom apartment respectively, which can be purchased separately, if required.

Additional parking spots available for guest parking on a temporary basis.

**O&M:** Top notch Maintenance and operations to remain with owners for at least the first five years to ensure a comfortable environment for the residents.

**Installment Plan:** 20% on booking, 6 quarterly installments and 10% final payment on handing over.

**Expected Completion and handover date:** By may 2024



